



Hebden

Camira

Composition:

Virgin Wool 40%, True Hemp 40%

Application:

Width: 140cm minimum

Weight: 460g/m² +/- 5% (645g/linear metre +/- 5%)

Pattern Repeat: Width 15cm, Length 23cm

Price band 3

Standards:

Abrasion Resistance: 50,000 Martindale cycles

Flammability: BS EN 1021-1:2006, BS EN 1021- 2:2006, BS 7176 :2007,

BS 5852 :2006 Section 4 Ignition Source 5

Light Fastness: 5 (ISO 105-B02: 2013)

Fastness to Rubbing: Wet: 3 Dry: 4 (ISO 105 – X12:2002)

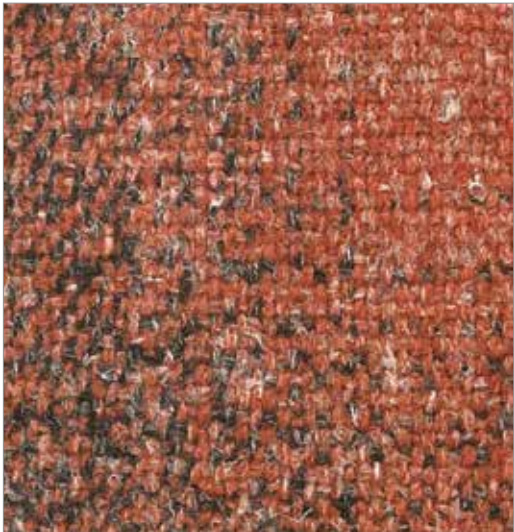
Colour Matching: Batch to batch variations in shade may occur within commercial tolerances.

Maintenance: Vacuum regularly. Wipe clean with a damp cloth.

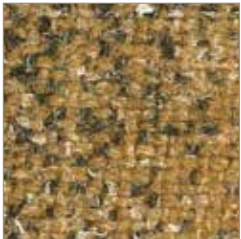
Hebden



Hopton
1HD07 HWC07



Horsforth
1HD08 HWC08



Hayton
1HD03 HWC03



Hexby
1HD02 HWC02



Honeywell
1HD19 HWC19



Hornby
1HD20 HWC20



Hawes
1HD16 HWC16



Pinpoint

Herman Miller

Composition:
antimony-free Polyester 100%

Application:
Width: 57.75"
Weight: 13.3 ounces/linear yard
Price Band 3

Standards:
Abrasion: Wyzenbeek, 75,000 double rubs
Flammability: CA TB 117
Light Fastness: Grade 4-5, 40 hours

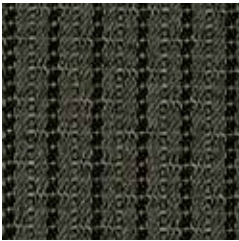
Colour Matching: Batch to batch variations in shade may occur within commercial tolerances.

Maintenance: Vacuum regularly.

Pinpoint



Charcoal
19880



Grey
19881



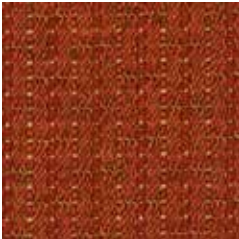
Navy
19850



Red
19830



Wine
19831



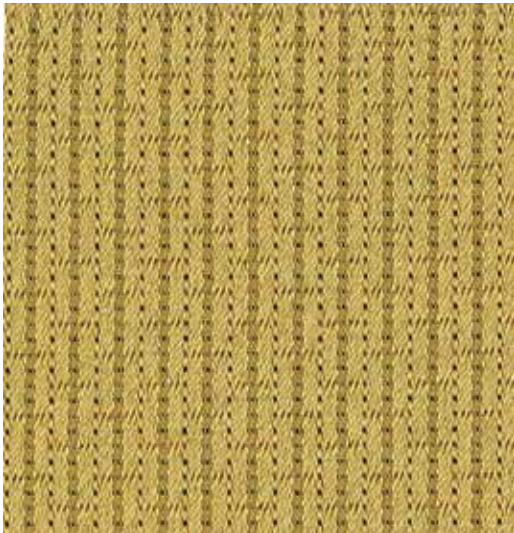
Luggage
19820



Trench
19870



Cordovan
19832



Camel
19811



Ottoman

Herman Miller

Composition:
post-consumer recycled polyester 100%

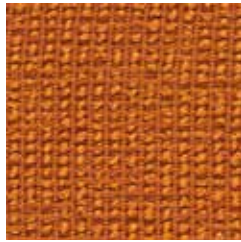
Application:
Width: approx 54"
Weight: 16 ounces per linear yard
Price Band 4

Standards:
Abrasion: Wyzenbeek, exceeds 100,000 double rubs
Flammability: CA TB 117
Light Fastness: Grade 4.5, 40 hours

Colour Matching: Batch to batch variations in shade may occur within commercial tolerances.

Maintenance: Vacuum regularly.

Ottoman



Luggage
19721



Vicuna
19712



Trench
19770



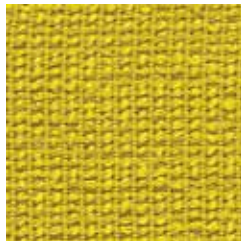
Camel
19711



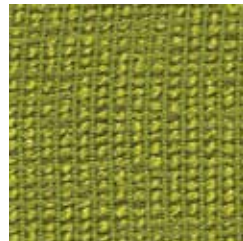
Cream
19710



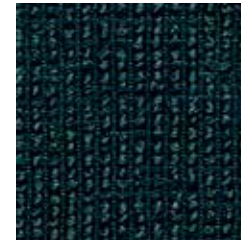
Stone
19713



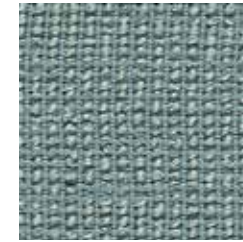
Citron
19720



Willow
19760



Cadet
19751



Oxford
19750



Blue
19752



Red
19730



Java
19771



Black
19780



Boucle

Herman Miller

Composition: post-consumer recycled polyester 100%

Application:

Width: approx 54"

Weight: 24 ounces per linear yard

Price Band 5

Standards:

Abrasion: Wyzenbeek, exceeds 100,000 double rubs

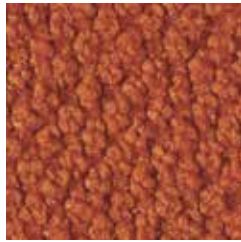
Flammability: CA TB 117

Light Fastness: Grade 4, 40 hours

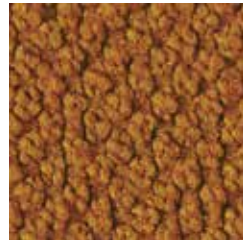
Colour Matching: Batch to batch variations in shade may occur within commercial tolerances.

Maintenance: Vacuum regularly.

Boucle



Luggage
1GA20



Copper
1GA21



Cream
1GA10



Stone
1GA80



Umber
1GA70



Camel
1GA12



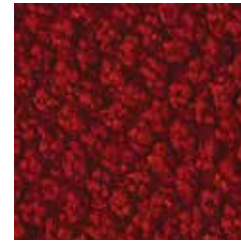
Dune
1GA11



Java
1GA71



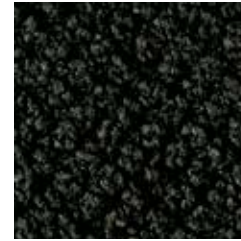
Black
1GA82



Wine
1GA30



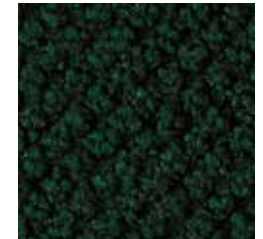
Red
1GA31



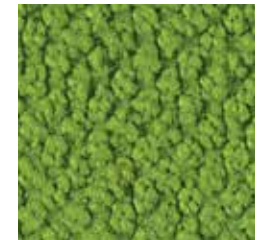
Graphite
1GA81



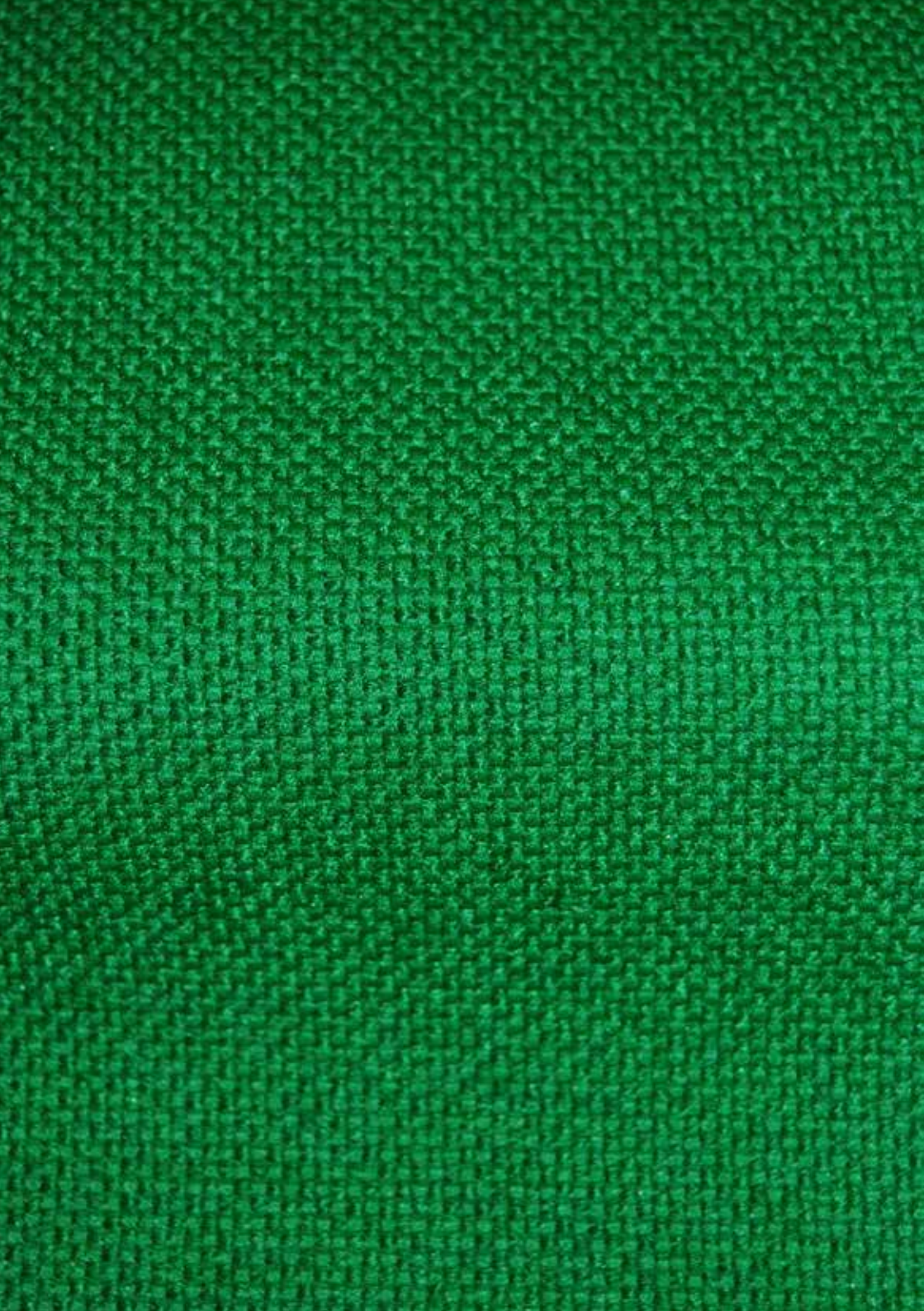
Navy
1GA50



Fir
1GA61



Willow
1GA60



Hopsak

Herman Miller

Composition:
Recycled Polyester 100%

Application:
Width: 56"
Weight: 19.7 ounces/linear yard
Price Band 5

Standards:
Abrasion: Wyzenbeek, 200,000 double rubs
Flammability: CA TB 117, NFPA 260, ASTM E 84
Light Fastness: Grade 4, 40 hours

Colour Matching: Batch to batch variations in shade may occur within commercial tolerances.

Maintenance: Vacuum regularly.



Sienna
14A41



Olive Green Dark
14A42



Raw Umber Dark
14A22



Emerald Dark
14A38



Sepia Dark
14A30



Ochre Dark
14A50

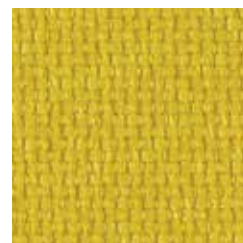


Terra Cotta
14A49

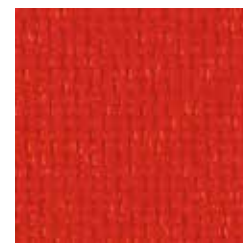


Orange
14A40

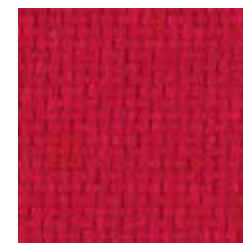
Hopsak



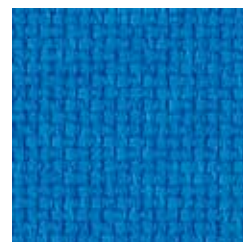
Yellow Dark
14A39



Crimson
14A43



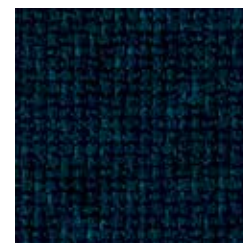
Crimson Dark
14A44



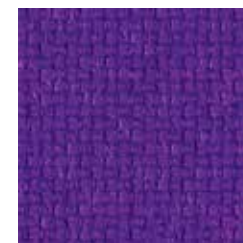
Cobalt Blue
14A48



Ultramarine Dark
14A47



Grey Blue Dark
14A26



Violet Dark
14A45



Black
14A20



Pink Dark
14A46



Striae

Herman Miller

Composition:
Polyester 62%, nylon 38%

Application:
Width: 53"
Weight: 18.3 ounces/linear yard
Price Band 5

Standards:
Abrasion: Wyzenbeek, exceeds 100,000 double rubs
Flammability: CA TB 117
Light Fastness: Grade 5, 40 hours

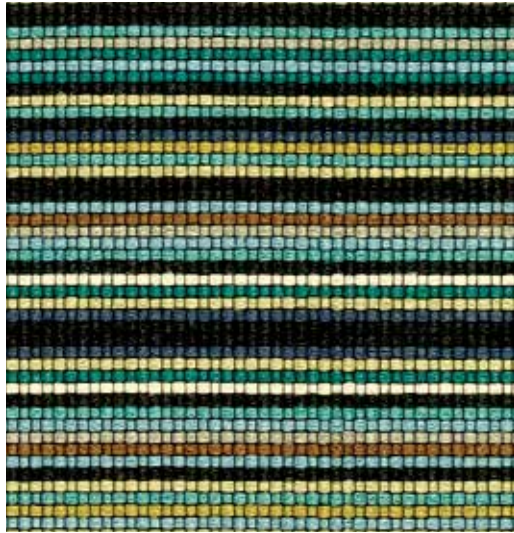
Colour Matching: Batch to batch variations in shade may occur within commercial tolerances.

Maintenance: Vacuum regularly.

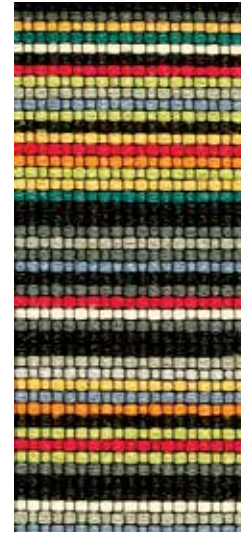
Striae



Charcoal Saddle
19990



Blue
19992



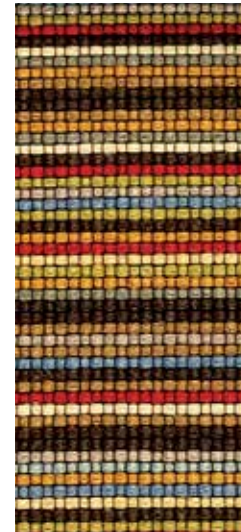
Bright
19994



Navy
19991



Neutral
19910



java Copper
19993



Camel Java
19911



Velvet Plaid

Herman Miller

Composition:

Polyester 94%, acrylic 6%; Pile acrylic 100%

Application:

Width: 55"

Weight: 23.1 ounces/linear yard

Price Band 7

Standards:

Abrasion: Wyzenbeek, exceeds 50,000 double rubs

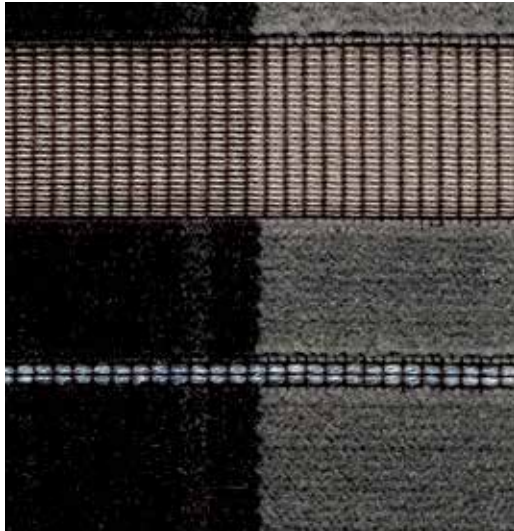
Flammability: CA TB 117

Light Fastness: Grade 6, 40 hours

Colour Matching: Batch to batch variations in shade may occur within commercial tolerances.

Maintenance: Vacuum regularly.

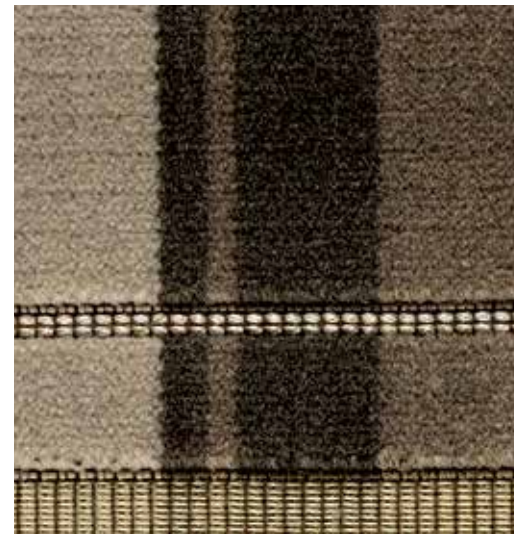
Velvet Plaid



Charcoal
20180



Cream
20110



Umber
20170



Wool Satin

Herman Miller

Composition:

Polyester 40%, virgin wool 33%, cotton 27%

Application:

Width: 56"

Weight: 23.1 ounces/linear yard

Price Band 7

Standards:

Abrasion: Wyzenbeek, exceeds 50,000 double rubs

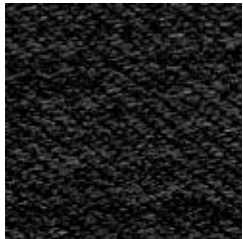
Flammability: CA TB 117

Light Fastness: Grade 6, 40 hours

Colour Matching: Batch to batch variations in shade may occur within commercial tolerances.

Maintenance: Vacuum regularly.

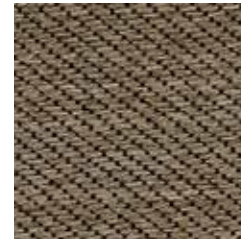
Wool Satin



Charcoal
20281



Flannel
20280



Trench
20270



Umber
20271



Basketweave

Herman Miller

Composition:
Cotton 60%, wool 40%

Application:
Width: 53"
Weight: 31.8 ounces/linear yard
Price Band 8

Standards:
Abrasion: Wyzenbeek, 35,000 double rubs
Flammability: CA TB 117
Light Fastness: Grade 4, 40 hours

Colour Matching: Batch to batch variations in shade may occur within commercial tolerances.

Maintenance: Vacuum regularly.

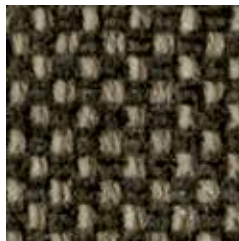
Basketweave



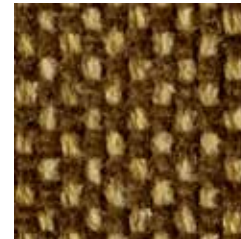
Dune
18710



Camel Flannel
18712



Stone
18780



Charcoal
18781



Saddle
18711



Umber
18770



Alpaca Mohair

Herman Miller

Composition:

Alpaca 63%, cotton 21%, Polyester 16%

Application:

Width: 54"

Weight: 29.7 ounces/linear yard

Price Band 9

Standards:

Abrasion: Wyzenbeek, exceeds 40,000 double rubs

Flammability: CA TB 117

Light Fastness: Grade 4, 40 hours

Colour Matching: Batch to batch variations in shade may occur within commercial tolerances.

Maintenance: Vacuum regularly.

Alpaca Mohair



Sepia
18570



Vicuna
18512



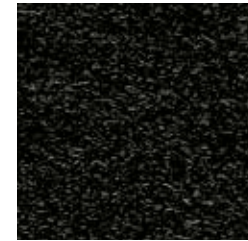
Umber
18571



Dune
18510



Trench
18511



Charcoal
18582



Flannel
18581



Fog
18580

Leather

Herman Miller

Composition:
Leather 100%

Application:
Hide Size: Approximately 50 square feet. Non-directional
Weight: 233g/m² (2.5 ounces/square foot)
Price Band 9

Standards:
Abrasion: Wyzenbeek, 100,000 double rubs
Flammability: CA TB 117, NFPA 260
Light Fastness: Grade 4, 40 hours

Colour Matching: Batch to batch variations in shade may occur within commercial tolerances.

Maintenance: Vacuum regularly. Wipe clean with a damp cloth.

Leather



Black
2109



Graphite
2111



Honey
2103



Mink
2108



Copper
2104



Wheat
2102



Tobacco
2107



Ivory
2101



Smoke
2110



MCL Leather

Herman Miller

Composition:
Leather 100%

Application:
Width: approx. 22 square feet/hide
Weight: 2.5 ounces/square foot
Price Band 11

Standards:
Abrasion: Wyzenbeek, exceeds 60,000 double rubs
Flammability: CA TB 117, NFPA 260
Light Fastness: Grade 4, 40 hours

Colour Matching: Batch to batch variations in shade may occur within commercial tolerances.

Maintenance: Vacuum regularly.

MCL Leather



Espresso
1R07



Brown
1R06



Black
1R10



Luggage
1R04



Ivory
1R02



Almond
1R03



Lava
1R09



Pearl
1R01



Red
1R05



Stone
1R08