

HAWORTH

European Colour Collection

**Fabrics & Finishes
Overview**

2025 Q1

Our Sustainability Commitment

Haworth's latest material and finish offerings have the durability and sustainability our customers expect.

Using recycled fibers, as well as water-based paints and stains, we provide environmental solutions wherever possible.

Sustainability features of our fabric collections include:

- OekoTex Standard 100 certified fabrics
- EU Ecolabel certified fabrics
- Cradle-2-cradle certified fabrics
- Second nature and GRS recycled fabrics
- Fabrics made of Ocean plastic



Our Partners

The Haworth Colour Collection is designed with the philosophy that our fabrics and finishes are offered broadly across our various product lines (unless constrained by manufacturing processes) allowing designers to blend products simply and easily.

At Haworth we ensure our fabrics satisfy the highest quality standards so they look and feel good for years on end. Needless to say, we offer a vast variety of materials and colours for all kinds of furniture.

The broad spectrum of surfaces we offer at Haworth ranges from real wood and veneer to melamine and glass, giving you every opportunity to select the right solution to suit your specific requirements.

We create partnerships with companies that conform to our values and ensure added value for our customers.

ANTICCUIR



camira

FIDIVI*

Gabriel



kvadrat

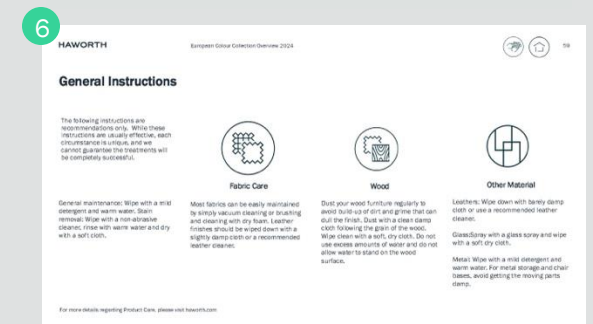
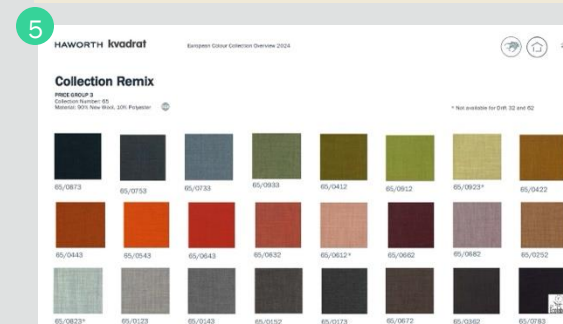
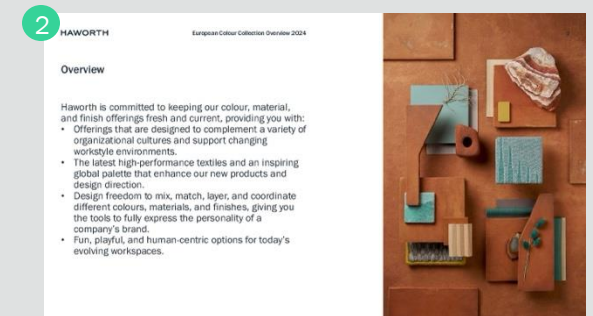


European Colour Collection Overview

How To Use this guide

The following overview explains how information is organized within this catalogue.

- 1 **Front Cover**
Includes title and date of most recent update
- 2 **Information Page**
- 3 **Table of Contents/Overview**
Table of contents with page numbers and direct links Click on **View** button to see each collection then navigate back to TOC page by clicking the home icon.
- 4 **Section Pages**
- 5 **Collection Pages**
Each page contains the following:
 - Provider/Manufacturer logo
 - Icon that links back to **Table of Contents** page
 - Icon that links to **Cleaning & Disinfecting** pages
 - Collection Name
 - Price Group Information
 - Collection Number
 - Material information
 - Colour Swatches with appropriate colour codes
 - Material Classifications
- 6 **Additional Information**
Product Care Instructions and Disinfecting



Contents

FABRIC - PRICE GROUP 0

- Collection **Felicity** (34) [View](#)
- Collection **Convert** (50) [View](#)
- Collection **Xtreme** (82) [View](#)

FABRIC - PRICE GROUP 1

- Collection **Flex** (22) In phase-out! [View](#)
- Collection **Atlantic** (23) [View](#)
- Collection **X2** (59) [View](#)
- Collection **King L Kat** (63) [View](#)
- Collection **Maya** (66) [View](#)

FABRIC - PRICE GROUP 2

- Collection **Fame** (39) [View](#)
- Collection **Skai Evida** (51) [View](#)
- Collection **Blazer** (61) [View](#)
- Collection **Oceanic** (4T)  [View](#)
- Collection **Class** (68) [View](#)
- Collection **Diagonale** (4N) [View](#)
- Collection **Relate** (1B)  [View](#)

European Colour Collection Overview 2025

FABRIC - PRICE GROUP 3

- Collection **Remix** (65)  [View](#)
- Collection **Atlas** (LW)  [View](#)

FABRIC - PRICE GROUP 4 -

- Collection **Big Arrow** (4D) 26 [View](#)

FABRIC - PRICE GROUP 5

- Collection **SteelCut Trio 3** (58)  [View](#)
- Collection **Anti-Cuir - Leather** (98) [View](#)


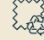


FABRIC - PRICE GROUP 6

- Collection **Hallingdal 65** (SZ)  [View](#)
- Collection **Divina Melange 3** (SV)  [View](#)

FABRIC - MESH

- Collection **Runner** (40) [View](#)
- Collection **Rhythm** (42) [View](#)
- Collection **Mesh** (47) Update! [View](#)
- Collection **47 - Mesh** [View](#)
- Collection **48 - Mesh** [View](#)

FABRIC - PRODUCT SPECIFIC

- Collection **Soji Knit** (XT) [View](#)
- Collection **Knit**  [View](#)
- Collection **Digital Knit** New! [View](#)
- Felt- **BuzziFelt, Drift Felt** New!  [View](#)
- BuzziFabric** New!  [View](#) [View](#)
- Hero 2** New!  [View](#) [View](#)

FINISHES - SOLID TEXTILE BOARD


- Collection **Really - Tijo** [View](#)


FINISHES - PLASTIC

- Collection **Very Guest** [View](#)
- Collection **Seating** [View](#)
- Collection **Maari** [View](#)
- Collection **Bowi** [View](#)
- Collection **Tambour doors** [View](#)

FINISHES - MELAMINE

- Melamine Standard/Decor** [View](#)

 Available across Haworth's global product offering

 Recycled fabric

FINISHES - VENEER

- Standard Veneer** [View](#)

FINISHES - FENIX

- Special - Anyway Connect** [View](#)

FINISHES - WOOD

- Natural Wood** [View](#)

FINISHES - GLASS

- Glass structures** [View](#)

FINISHES - STRUCTURES

- Base/structure - Seating** [View](#)
- Base /Structure - Lounge** [View](#)
- Metal - Furniture** [View](#)
- Metal- Intuity** [View](#)

PRODUCT CARE

- General Information** [View](#)
- Cleaning & Disinfecting** [View](#)

[Click here to go back Contents page](#)

HAWORTH

Fabrics

At Haworth we ensure our fabrics satisfy the highest quality standards so they look and feel good for years on end. Needless to say, we offer a vast variety of materials and colours for all kinds of furniture.



Note, that the following digital samples are for illustration purposes only. For the real colour, please refer to the physical swatch. All digital samples are valid until further notice.



Collection Felicity

PRICE GROUP 0

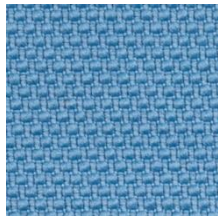
Collection Number: 34

Material: 100% Polyester, recycled

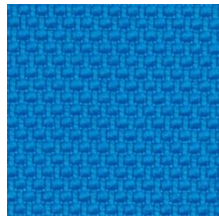
Colours exclusive to Haworth



34/0071



34/0077*



34/0076



34/0091



34/0050*



34/0063



34/0066



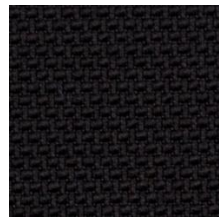
34/0021*



34/0022*



34/0015*



34/0010



34/0014

* Not available for Drift 32 and Drift 62



Collection Convert

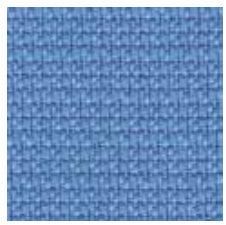
PRICE GROUP 0

Collection Number: 50

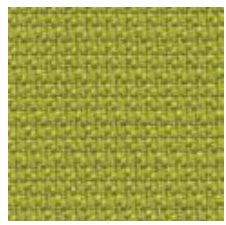
Material: 100% Polyester FR, recycled



50/0303



50/0351



50/0451



50/0051*



50/0201



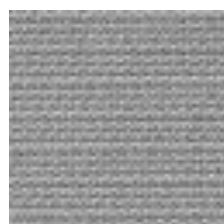
50/0501*



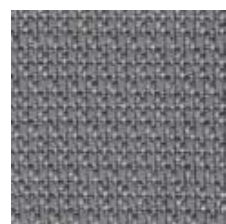
50/0503



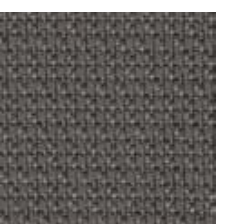
50/0601



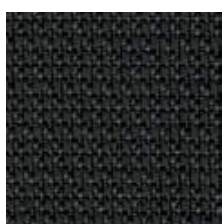
50/0602



50/0603



50/0552



50/0651

* Not available for Drift 32





Collection Xtreme

PRICE GROUP 0

Collection Number: 82

Material: 100% Polyester Xtreme Fr, recycled



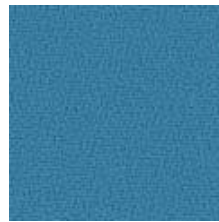
82/0026



82/0171



82/0005



82/0073



82/0074



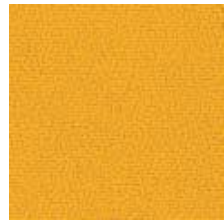
82/0159



82/0156



82/0096



82/0072*



82/0076



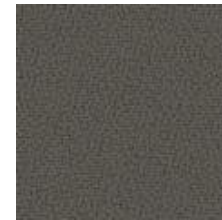
82/0108*



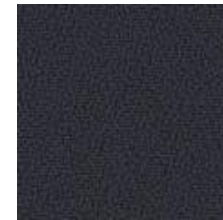
82/0173*



82/0094



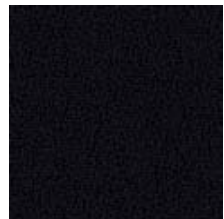
82/0141



82/0172



82/0046



82/0009

* Not available for Drift 32 and Drift 62





Collection Flex **To be discontinued** Available until Dec 2024**

PRICE GROUP 1

Collection Number: 22

Material: 100% Polyester



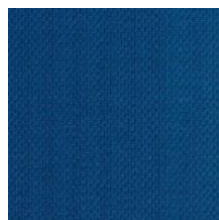
22/6065



22/6057



22/7031



22/6062



22/6061



22/8056



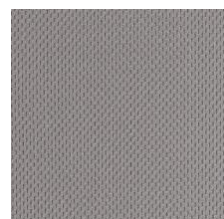
22/3036



22/4089



22/1078*



22/0011



22/0025



22/0999

* Not available for Drift 62

** Collection will be discontinued from standard offering effective December 2024





Collection Atlantic

PRICE GROUP 1

Collection Number: 23

Material: 100% Polyester



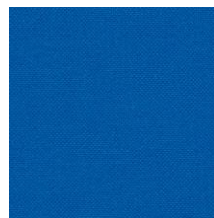
23/7043



23/6057



23/0143



23/6125



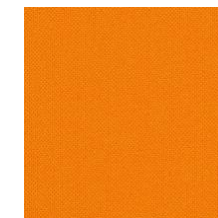
23/6063



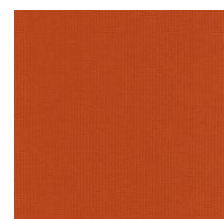
23/2048



23/8054



23/3055 **



23/3034



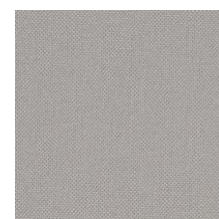
23/4093



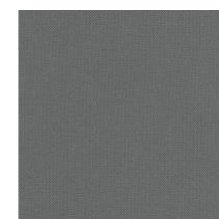
23/5037



23/5075



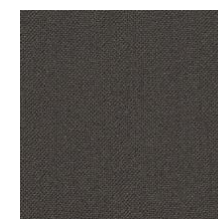
23/0141*



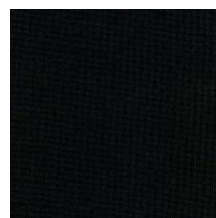
23/0011**



23/0025



23/0142



23/0999

*Not available for Drift 32 and Drift 62
** Not available for Drift 32



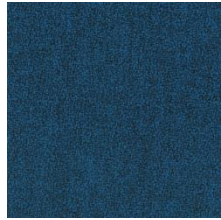


Collection X2

PRICE GROUP 1

Collection Number: 59

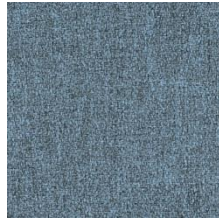
Material: 100% Polyester Xtreme FR, recycled



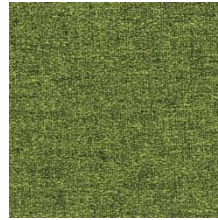
59/0008



59/0002



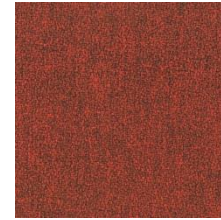
59/0006



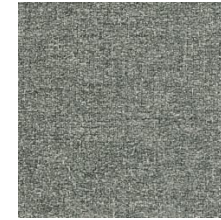
59/0005



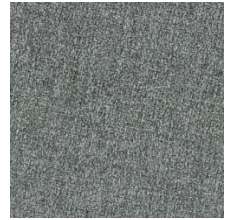
59/0016



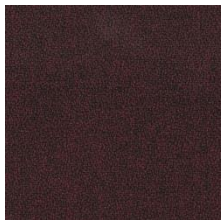
59/0015



59/0019



59/0020



59/0012





Collection King L Kat

PRICE GROUP 1

Collection Number: 63

Material: 100% Polyester Trevira CS



63/6052



63/6091



63/7022



63/7019



63/3030



63/3005



63/3082



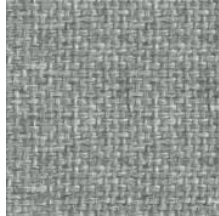
63/4021



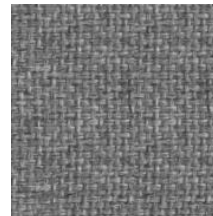
63/1025



63/1008



63/8032



63/8006



Collection Maya

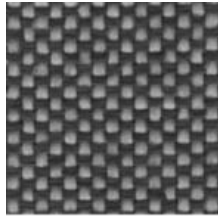
PRICE GROUP 1

Collection Number: 66

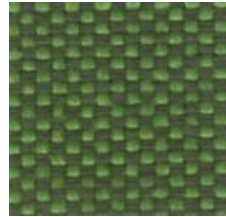
Material: 100% Polyester Trevira CS



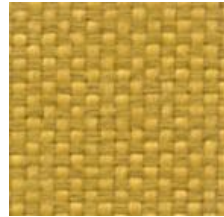
66/9604



66/9803*



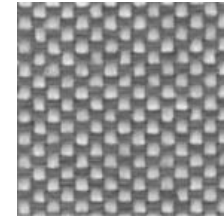
66/9704



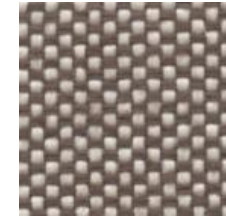
66/9309



66/9404



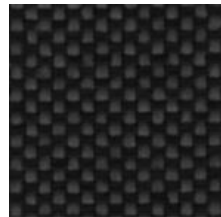
66/9107



66/9212



66/9228*



66/9805*

* Not available for Openest Plume Screens





Collection Fame

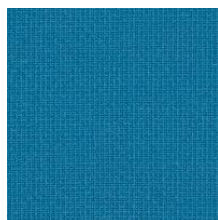
PRICE GROUP 2

Collection Number: 39

Material: 95% NZ Wool, 5% Polyamide



39/7005



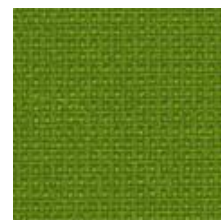
39/6133



39/7068



39/8146



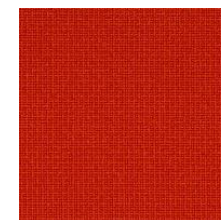
39/8035



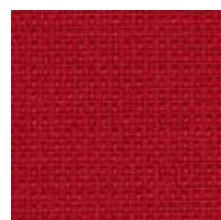
39/8147



39/2068



39/3078



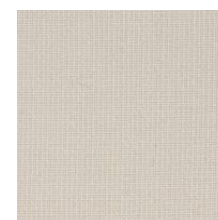
39/4089



39/4169



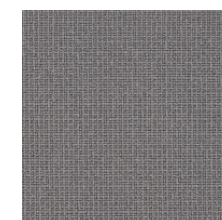
39/1003



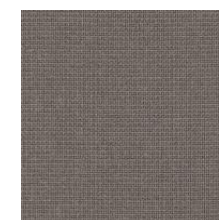
39/0005



39/1135



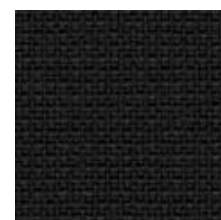
39/0078



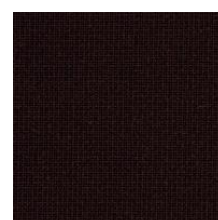
39/0003



39/1133



39/0999



39/1044

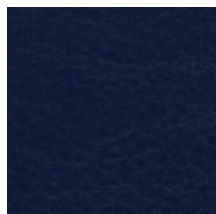


Collection Skai Evida – Faux Leather **Update!**

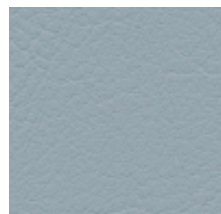
PRICE GROUP 2

Collection Number: 51

Material: 50% Renewable raw materials + 30% Natural based raw materials + 20% Raw materials based on crude oil



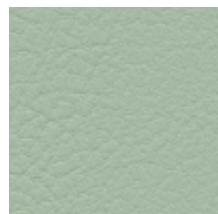
51/0025
Royal



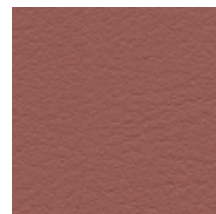
51/0076
Stone Blue *



51/0078
Dark Moss*



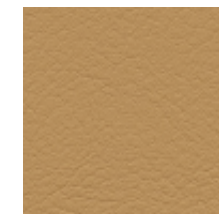
51/0077
Sage*



51/0082
Marsala *



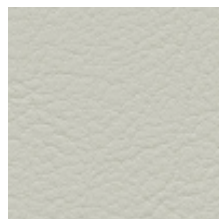
51/0081
Rosé*



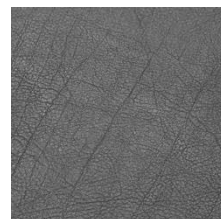
51/0084
Gobi *



51/0022
Cream



51/0073
Concrete *



51/0031
Antracite



51/0032
Black

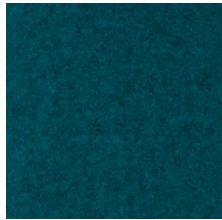


Collection Blazer

PRICE GROUP 2

Collection Number: 61

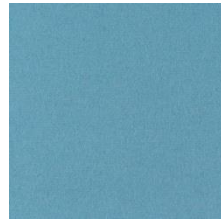
Material: 100% New Wool



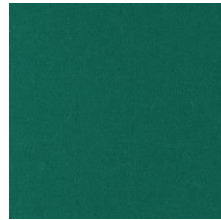
61/003B



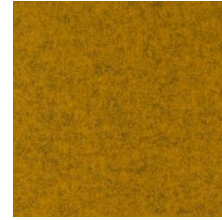
61/001W



61/002Z



61/003A



61/0082



61/0090



61/0039



61/002T



61/0028



61/002Q



61/001R



61/0030

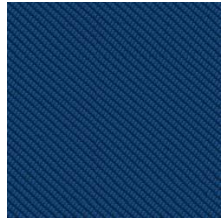


Collection Oceanic

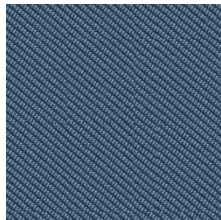
PRICE GROUP 2

Collection Number: 4T

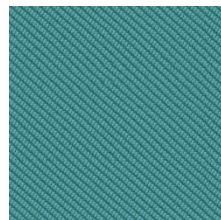
Material: 100% post-consumer recycled polyester, including 50% SEAQUAL® YARN



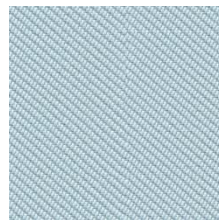
4TOAT
Atoll



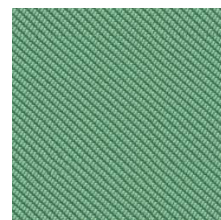
4TONP
Neptune



4TOJT
Jetsam



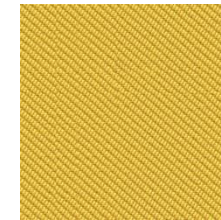
4TOGL
Gulf



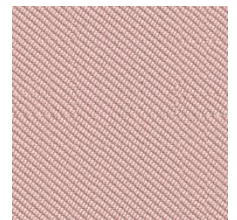
4TOSE
Sea



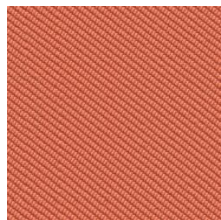
4TOCS
Coast



4TOBR
Barrier



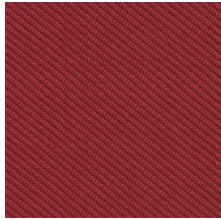
4TOSF
Seafarer



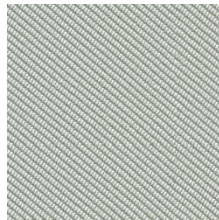
4TOCR
Coral



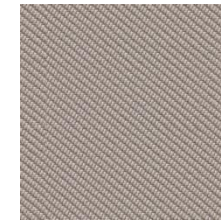
4TOAC
Aquatic



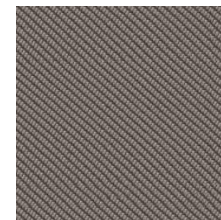
4TOAB
Abyss



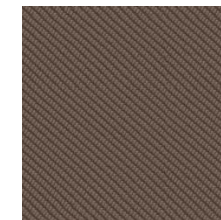
4TOPD
Paddle



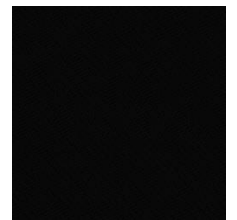
4TORP
Riptide



4TOBY
Bay



4TOSH
Shore



4TOFL
Flotsam



SEAQUAL
INITIATIVE



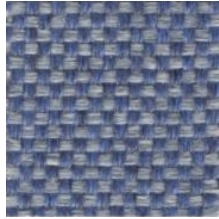


Collection Class

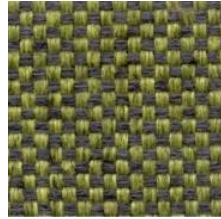
PRICE GROUP 2

Collection Number: 68

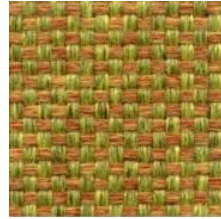
Material: 100% Polyester Trevira CS



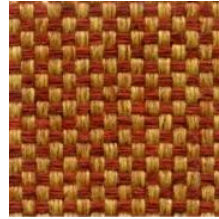
68/9605



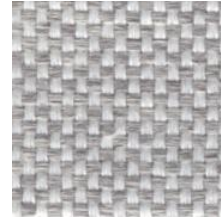
68/9705



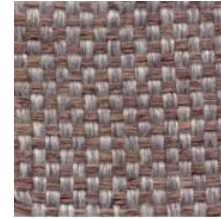
68/9702



68/9404



68/9109



68/9252



68/9805



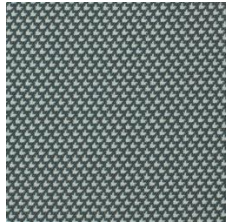
Collection Diagonale

PRICE GROUP 2

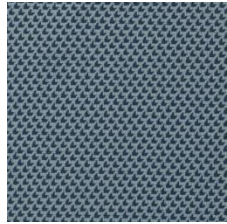
Collection Number: 4N

Material: 100% Polyester

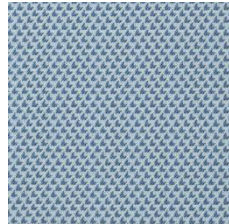
Designed by Patricia Urquiola exclusively for Haworth



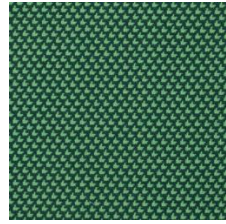
4NOMA
Matrix



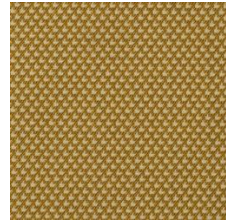
4NOCH
Chevron



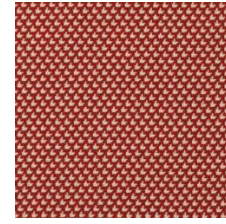
4NOFE
Featherstitch



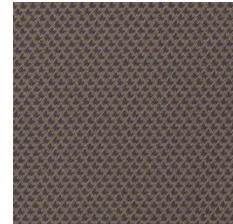
4NOST
Slant



4NODA
Diamond



4NOBA
Bias



4NOHT
Half Timber



4NOSH
Slash



Collection Relate

PRICE GROUP 2

Collection Number: 1B

Material: 100% Trevira CS



1B-881



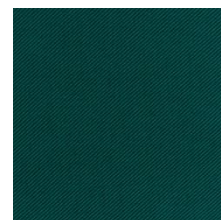
1B-741



1B-711*



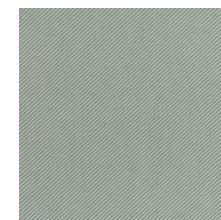
1B-991



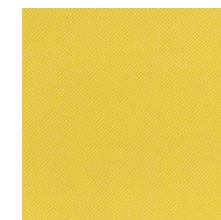
1B-981



1B-961



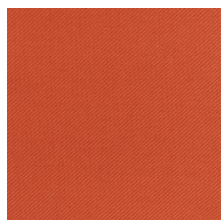
1B-921*



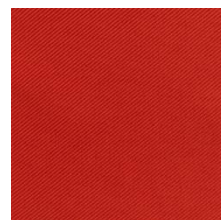
1B-431*



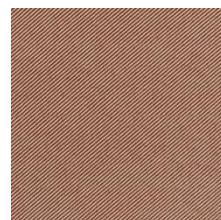
1B-461



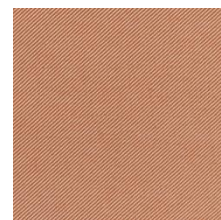
1B-561



1B-641



1B-341



1B-441



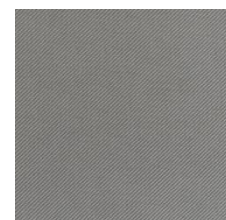
1B-271



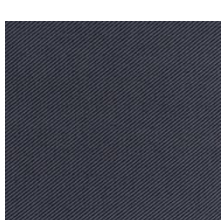
1B-381



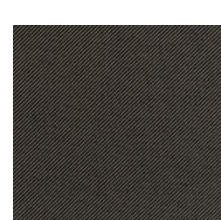
1B-121*



1B-151



1B-171



1B-181



1B-791

* Not available for Drift 32, Drift 62 and Nia





Collection Remix

PRICE GROUP 3

Collection Number: 65

Material: 90% New Wool, 10% Polyester



* Not available for Drift 32 and 62



65/0873



65/0753



65/0733



65/0933



65/0412



65/0912



65/0923*



65/0422



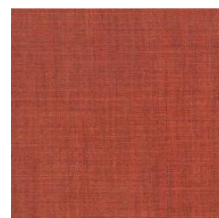
65/0443



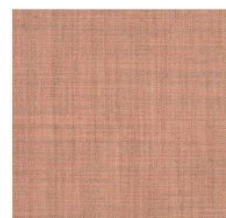
65/0543



65/0643



65/0632



65/0612*



65/0662



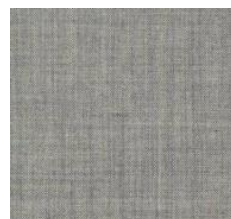
65/0682



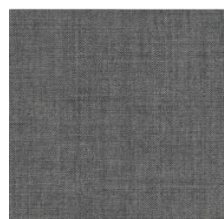
65/0252



65/0823*



65/0123



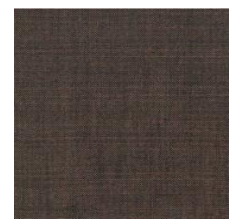
65/0143



65/0152



65/0173



65/0672



65/0362



65/0783



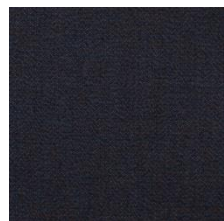


Collection Atlas

PRICE GROUP 3

Collection Number: LW

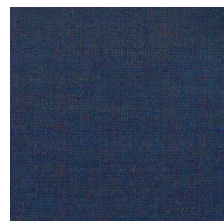
Material: 90% Wool, 10% Nylon



LW - S881



LW - Q771



LW - R861



LW - T931



LW - V951



LW - H531



LW - E461



LW - N651



LW - G501



LW - J561



LW - F471



LW - L621



LW - P671



LW - K571



LW - M631



LW - A131



LW - B151



LW - D361



LW - C181



Collection Big Arrow

PRICE GROUP 4

Collection Number: 4D

Material: 80% Polyester, 20% Trevira CS

Designed by Patricia Urquiola exclusively for Haworth



4DODB
Dark Blue



4DOBL
Blue



4DOGR
Green



4DOGD
Gold



4DORE
Red



4DOCN
Cool Neutral



4DOMG
Medium Grey



Collection SteelCut Trio 3

PRICE GROUP 5

Collection Number: 58

Material: 90% pure New Wool, 10% Nylon 



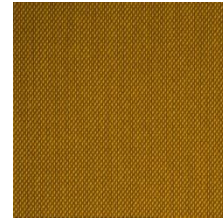
58/0796



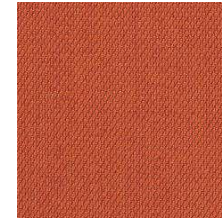
58/0883



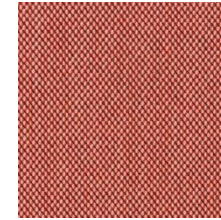
58/0966



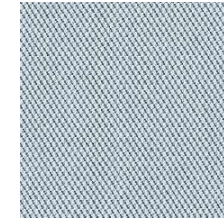
58/0453



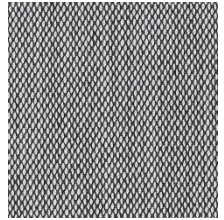
58/0533



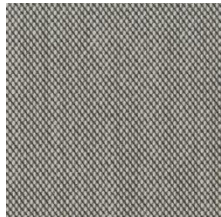
58/0636



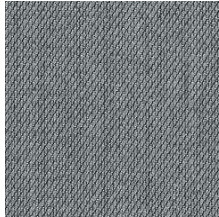
58/0713



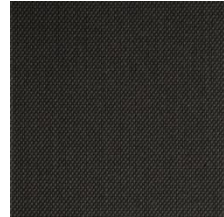
58/0124



58/0133



58/0153



58/0383



Collection Antic Cuir Serie 100 - Leather

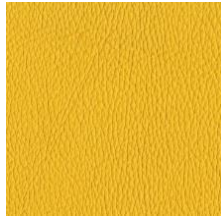
PRICE GROUP 5

Collection Number: 98

Material: Pigmented grain-leather



98/1114



98/1134



98/1145



98/1179



98/1126



98/1142



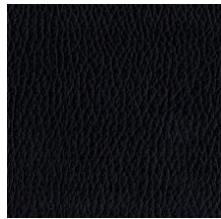
98/1128



98/1101



98/1148



98/1103

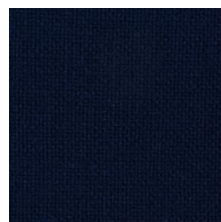


Collection Hallingdal 65

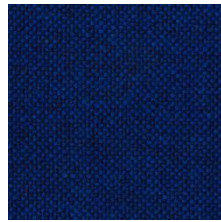
PRICE GROUP 6

Collection Number: SZ

Material: 70% New Wool, 30% Viscose



SZ - 764



SZ - 754



SZ - 944



SZ - 407



SZ - 526



SZ - 687



SZ - 200



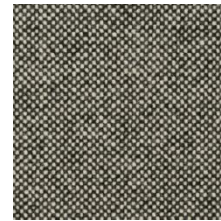
SZ - 110



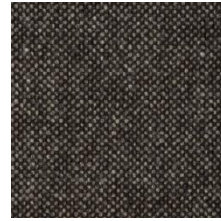
SZ - 116



SZ - 130



SZ - 126



SZ - 368



Collection Divina Melange 3

PRICE GROUP 6

Collection Number: SV

Material: 100% New Wool



SV - 687



SV - 967



SV - 427



SV - 557



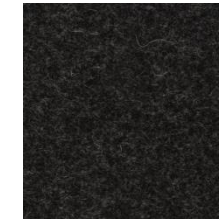
SV - 120



SV - 227



SV - 170



SV - 180



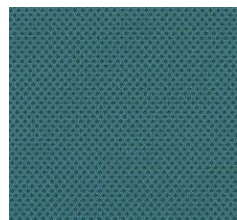
Collection Runner

PRICE GROUP Mesh

Collection Number: 40 - Mesh

Material: 100% Polyester

Colours exclusive to Haworth (with the exception of 40/0999 and 40/0011)



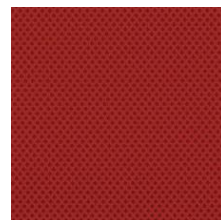
40/6150
Corn Flower



40/8118
Peat Moss



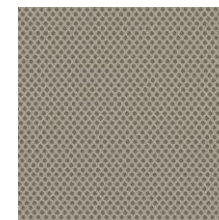
40/2055
Sunflower



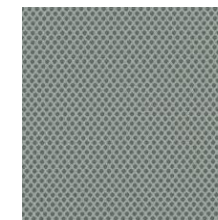
40/4127
Sedum



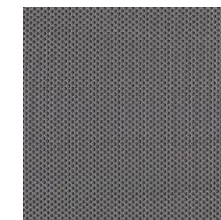
40/0173
Moon Flower



40/1191
Beach



40/0169
Silver Leaf



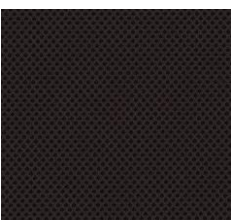
40/0011
Byzantina



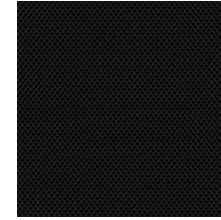
40/1193
Mushroom



40/0171
River Rock



40/0170
Mulch



40/0999
Black

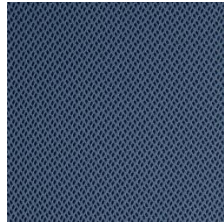


Collection Rhythm

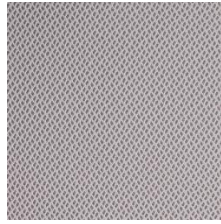
PRICE GROUP Mesh

Collection Number: 42 - Mesh

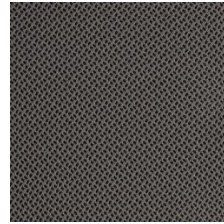
Material: 100% Polyester FR



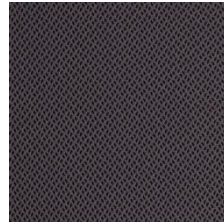
42/6152



42/0165



42/0176



42/0025



42/0999



2024/05/04



Collection Mesh **Update!**

PRICE GROUP Mesh

Collection Number: 47/0400 – Mesh

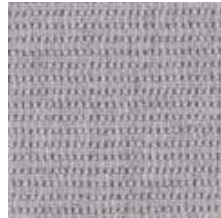
Material: 100% Polyester



47/0414**
Balsam



47/0415**
Water



47/0403
Relax



47/0402
Comfort



47/0401
Support

** Available for Zody II only

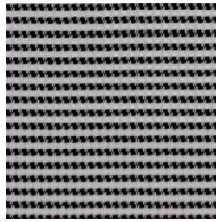


Collection Mesh 47*

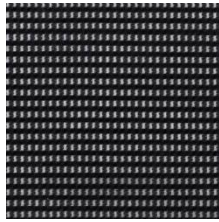
PRICE GROUP Mesh

Collection Number: 47-Mesh

Material: 70% Polyester, 30% Polyamide



47/0020*
Grey-Black



47/0010*
Black

*Available only for Comforto 99 and Comforto 39



Collection Mesh 48*

PRICE GROUP Mesh

Collection Number: 48-Mesh

Material: 100% Polyester



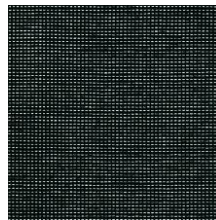
48/0203
Kale



48/0205
Fog



48/0208
Slate



48/0201
Black

* Available only for Very Task



Collection Soji Knit*

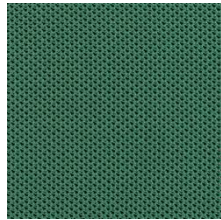
PRICE GROUP - Knit

Collection Number: XT-Knit

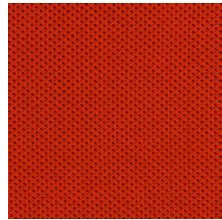
Material: 95% Polyester, 5% Monofilament Polyester



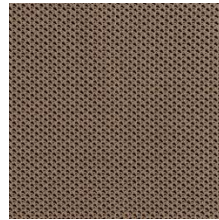
Navy – XT006



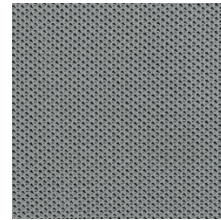
Juniper – XT004



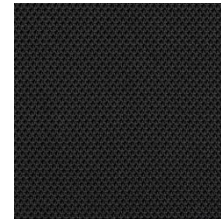
Cayenne – XT002



Clay - XT003



Mist - XT005



Carbon – XT001

* Available only for Soji



Collection Knit **New!**

PRICE GROUP – Knit

PRODUKT SPECIFIC – Haworth Cardigan Lounge

Collection Number:

Material: 100% Polyester recycled (Xtreme®)



HALCB03
Light Blue



HALCB02
Light Green



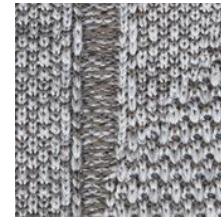
HALCB01
Dark Green



HALCB05
Red



HALCB06
Yellow



HALCB04
Grey



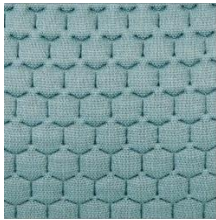
Collection Digital Knit **New!**

PRICE GROUP – Knit

PRODUKT SPECIFIC – Fern Digital Knit

Collection Number:

Material: 100% Polyester recycled



XQ2WT
Waterside



XQ2MR
Mariner



XQ2DR
Dune Rose



XQ2EM
Emberglow

* Available only for Fern Digital Knit

BuzziFelt* New!

PRICE GROUP – Felt

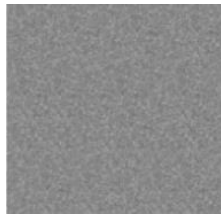
PRODUCT SPECIFIC – Haworth Collaborate

Collection Number: BF

Material: 100% Recycled P:E:T Felt, latex backing



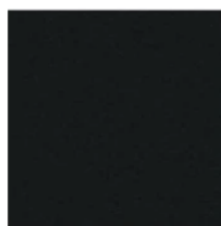
BF063
Offwhite 63



BF067
StoneGrey 67



BF075
Jeans 75



BF068
Anthracite 68

Drift Felt 2.0 New!

PRICE GROUP – Felt

PRODUCT SPECIFIC – Drift Felt 2.0 Screen

Collection Number: BZ

Material: 100% Recycled Material



BZ005
Grey

* Available only for Haworth Collaborate Carts liners and
Haworth Collaborate Screen Fabric

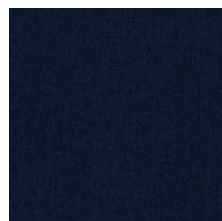
BuzziFabric ^{New!} Page 1/2

PRICE GROUP – Take info from Buzzispace colour overview 2024

PRODUCT SPECIFIC – Drift Felt 2.0 Fabric

Collection Number: CAT A - Buzzispace

Material: 70% Recycled Wool, 25 % Recycled Polyacryl, 5 % Recycled Other Fabric



FA-Navy 1007



FA-Blue 45



FA-Indigo 90



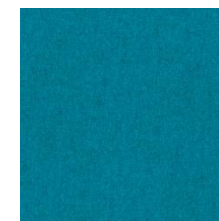
FA-Petrol 56



FA-Electric 16



FA-Aqua 143



FA-OceanBlue 147



FA-Azure 144



FA-LightBlue 41



FA-Violet 72



FA-Purple 78



FA-Aubergine 74



FA-Lila 39



FA-Prune 76



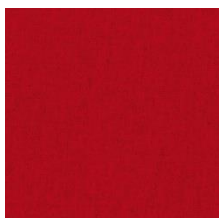
FA-Fuchsia 77



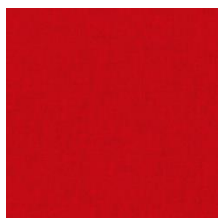
FA-Pink



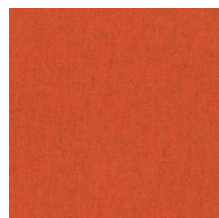
FA- Nude 70



FA-Red 2011



FA-Fire 139



FA-Orange 2010



FA-Mandarin 129



FA-Mustard 63



FA-Yellow 24



FA-Mint 50

BuzziFabric ^{New!} Page 2/2

PRICE GROUP – Take info from Buzzispace colour overview 2024

PRODUCT SPECIFIC – Drift Felt 2.0 Fabric

Collection Number: CAT A - Buzzispace

Material: 70% Recycled Wool, 25 % Recycled Polyacryl, 5 % Recycled Other Fabric



FA-Jade 42



FA-Grass 59



FA-Pistache 52



FA-Olive 53



FA-Bottle 61



FA-Army 14



FA-Ivory 101



FA-Naturel 1



FA-Beige 1037



FA-Kiesel 7



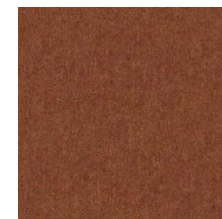
FA-Dolphin 180



FA-Shitake 124



FA-Camel 56



FA-Autumn 33



FA-Rust 29



FA-Taupe 1008



FA-DarkBrown 18



FA-Silver 57



FA-LightGrey 1000



FA-MidGrey 1001



FA-Black 1003



Hero 2 ^{New!} Page 1/2

PRICE GROUP

PRODUCT SPECIFIC – Drift Felt 2.0 Fabric

Collection Number: CAT C- BuzziSpace

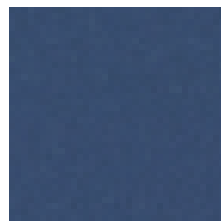
Material: 96% New Wool, 4 % Nylon



Hero 782



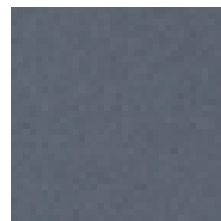
Hero 772



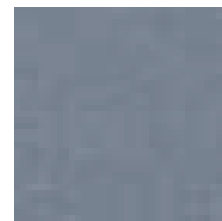
Hero 752



Hero 742



Hero 152



Hero 732



Hero 672



Hero 622



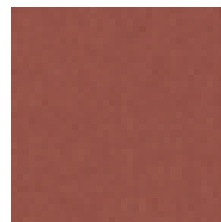
Hero 652



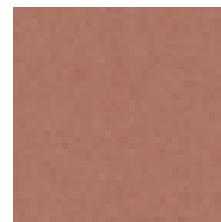
Hero 662



Hero 552



Hero 542



Hero 512



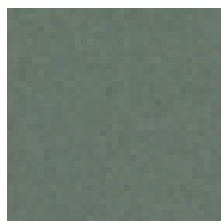
Hero 422



Hero 962



Hero 942



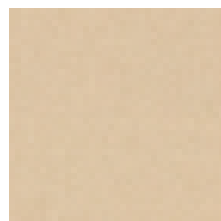
Hero 932



Hero 912



Hero 862



Hero 202



Hero 312



Hero 432



Hero 352



Hero 372

Hero 2 ^{New!} Page 2/2

PRICE GROUP -

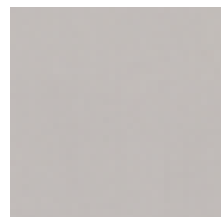
PRODUCT SPECIFIC - Drift Felt 2.0 Fabric

Collection Number: CAT C- BuzzSpace

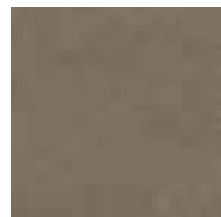
Material: 96% New Wool, 4 % Nylon



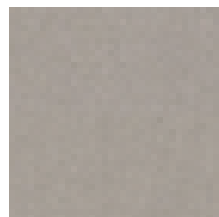
Hero 582



Hero 102



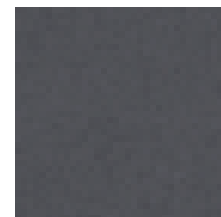
Hero242



Hero 212



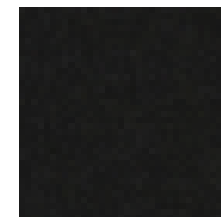
Hero162



Hero182



Hero392



Hero192



Hero 882

HAWORTH

Finishes

The broad spectrum of surfaces we offer at Haworth ranges from real wood and veneer to melamine and glass, giving you every opportunity to select the right solution to suit your specific requirements.

Note, that the following digital samples are for illustration purposes only. For the real colour, please refer to the physical swatch. All digital samples are valid until further notice.





Collection Really – Solid Textile Board

PRODUCT SPECIFIC- Tijo

Collection Number: KR

Material: 70% recycled wool + 30% bicomponent binder



KR001 –
Cotton Blue



KR002-
Wool slate



Plastic – Very

PRODUCT SPECIFIC – Very Guest



206 Glacier



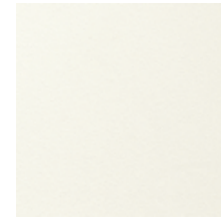
207 Grass



204 Ember



210 Tomato



209 Snow



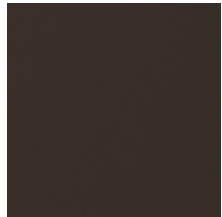
202 Canvas



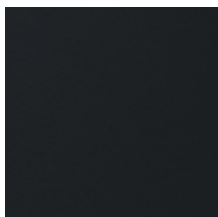
205 Fog



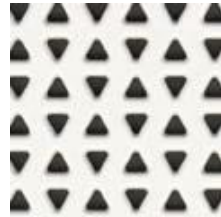
208 Slate



203 Cocoa



201 Black

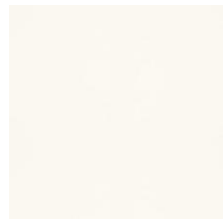


Perforated Back Structure



Plastic Seating

PRODUCT SPECIFIC
Material: 100% Polymer



Snow/White



Smooth Plaster



Smoke



Fog



Black

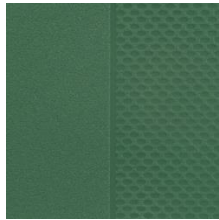


Plastic

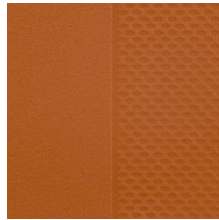
PRODUCT SPECIFIC

Material: 100% Polymer

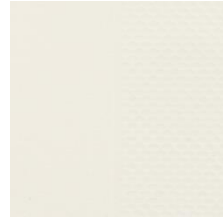
Maari™ -Shell and Arm Cap colours



Balsam –
TR1T0*

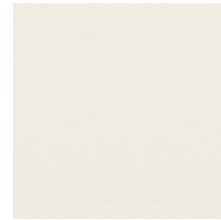


Rusty Red–
TRRRO*

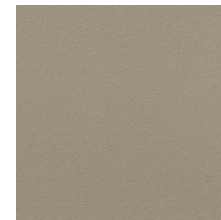


Smooth Plaster–
TRPLS

Bowi –Polymer Seat Shell colours



Smooth Plaster–
TRPLS



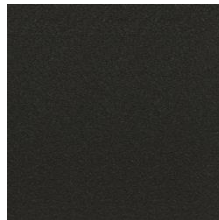
Gray Tone –
TRG00



Black –
TRF00



Coffee –
TRCFO



Black –
TRF00



100% recycled material for Maari

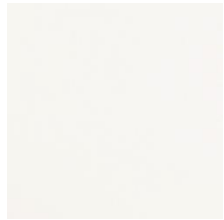
**Longer Lead time, please check with
Customer Service*

Product Specific – Colours and Finishes may vary by product, please check Product Colour Matrix for appropriate colours



Plastic – Tambour doors

PRODUCT SPECIFIC – Storages/Tambour doors



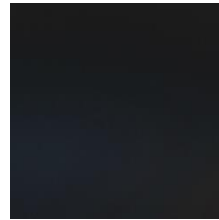
TEW - Edelweiss EC



T01/TA1 (Acoustic)
White EC



TLEO - Titanium EC

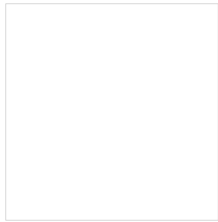


T04 - Dark Grey EC



Melamine

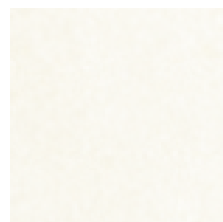
MELAMINE Standard



MEW - Edelweiss EC



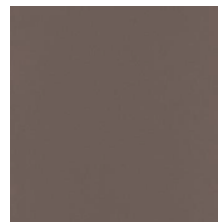
M01 - White EC



MA1 - Acoustics
White EC



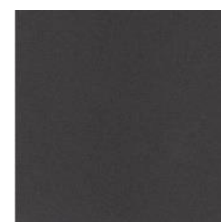
M05 - Sand EC



M06 - Lava EC

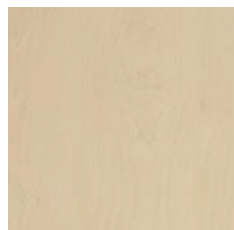


M02 - Light Grey EC



M04 - Dark Grey EC

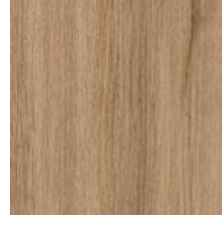
MELAMINE Decor



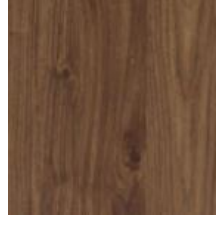
MD5 - Maple EC



MD7 - Light Oak



MD4 - Oak EC



MD6 - Walnut EC

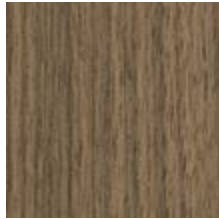


Veneer

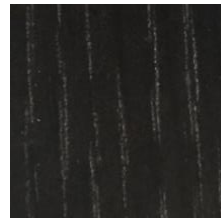
SPECIAL



Natural Oak EC*
V49



Walnut EC*
-NWW35



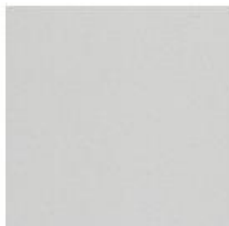
Black Oak EC*
NRW38

Fenix

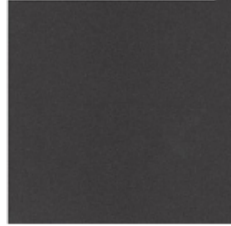
SPECIAL – For Anyway Connect tabletops only



White
F0032



Grey
F0725



Black
F0720

* Availability status: Except for Be_Hold, veneer will be handled via special processes until further notice

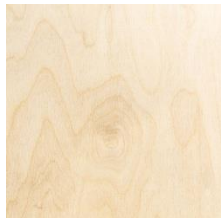


Wood Surface

MASSIVE WOOD



WD1 -
Wood Oak

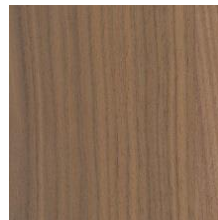


SPH -
Plywood *

WOOD LEG OPTIONS - Poppy™



M5W35 -
Natural Oak



M6W35 -
Natural Walnut



M7W43 -
Black Ash

WOOD LEG OPTIONS - Maari™



M5W35 -
Natural Oak



M5W44 -
Walnut on Oak



M5W45 - Ink
on Oak

TABLET OPTION - Maari/Poppy with tablet

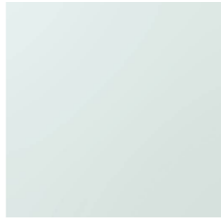


NR-W35 -
White Oak

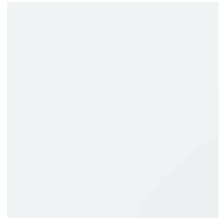
* Available for Tijo only



Glass

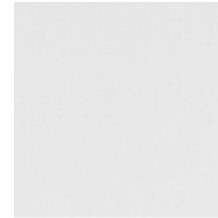


Snowglass
EC VBL



Clear transparent
EC OVT

PLEXIGLASS



White Sateen
plexiglass*

* Available for Audience and Hugo storage only

The images shown and colour representations are subject to your monitor quality and screen resolution settings. Physical samples are recommended, and available through your local Haworth dealer.

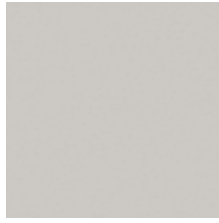


Structures – Base Seating

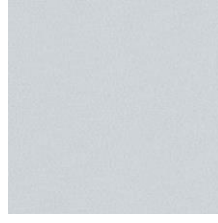
METAL – SEATING / CHAIR BASES



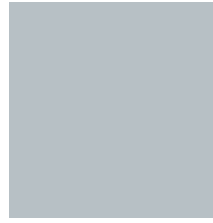
TRTWO –
Structured White EC



707 –
Chrome EC



TRLEO –
Titanium EC



600 –
Alu Polished EC

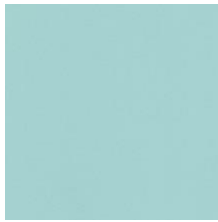


040 –
Structured Black EC

Powder/Lacquer Melamine



TR1G0 –
Structured Blue Jay



TR1J0 –
Structured Sky Blue



TR1Q0 –
Structured Park Green



TRCT0 –
Structured Chartreuse



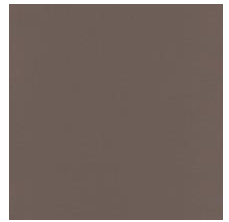
TR1K0 –
Structured Wren



TRRR0 –
Structured Rusty Red



TR1H0 –
Structured Terra



TR1M0 –
Structured Lava

Product Specific – Colours and Finishes may vary by product, please check Product Colour Matrix for appropriate colours



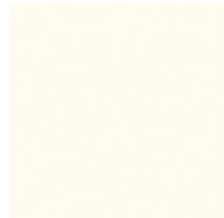
Structures – Lounge

PRODUCT SPECIFIC

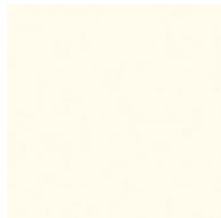
TABLET ARM –Maari with tablet /Poppy with tablet



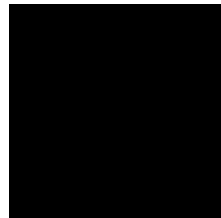
MDF Black



MDF White



Matte EU White



Matte EU Black



Structures – Furniture

METAL – FURNITURE POWDER PAINTS STANDARD



TRTWO –
Structured White EC



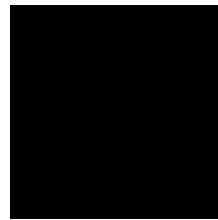
P08 –
Structured Sand EC



TRLEO –
Titanium EC



SW -
Alu Graphite EC



040 –
Structured Black EC



Structures – Furniture

PRODUCT SPECIFIC – Intuity

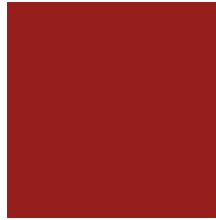
Additional options for metal colours for Accent Plate*



Ice blue EC



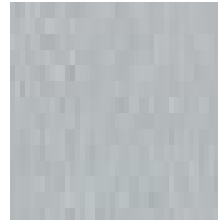
Orange EC



Signal red EC



White EC



Alu light silver EC

*Accent plate colours only apply to the side plates of Intuity desks, NOT to the central/recessed leg of bench systems.

HAWORTH

Cleaning and Maintenance

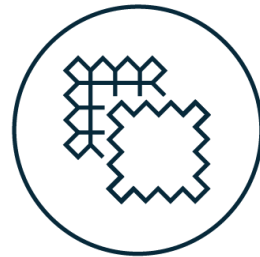
Lorem ipsum





General Instructions

The following instructions are recommendations only. While these instructions are usually effective, each circumstance is unique, and we cannot guarantee the treatments will be completely successful.



Fabric Care

General maintenance: Wipe with a mild detergent and warm water. **Stain removal:** Wipe with a non-abrasive cleaner, rinse with warm water and dry with a soft cloth.

Most fabrics can be easily maintained by simply vacuum cleaning or brushing and cleaning with dry foam. Leather finishes should be wiped down with a slightly damp cloth or a recommended leather cleaner.



Wood

Dust your wood furniture regularly to avoid build-up of dirt and grime that can dull the finish. Dust with a clean damp cloth following the grain of the wood. Wipe clean with a soft, dry cloth. Do not use excess amounts of water and do not allow water to stand on the wood surface.



Other Material

Leathers: Wipe down with barely damp cloth or use a recommended leather cleaner.

Glass: Spray with a glass spray and wipe with a soft dry cloth.

Metal: Wipe with a mild detergent and warm water. For metal storage and chair bases, avoid getting the moving parts damp.

Cleaning & Disinfecting

Cleaning is used to remove dirt from surfaces for general hygiene and maintenance. Cleaning **tools** include soap, water, and a damp cloth or other non-disinfectant cleaners.

Disinfecting removes up to 100% of bacteria, fungi and viruses from surfaces. Used primarily for hygiene reasons in homes, offices and medical settings. Disinfecting **tools** include various disinfectant solutions depending on the material of the surface being cleaned.

Most workplace surfaces can be cleaned with these three cleaning solutions:

These recommendations are for the purposes of **disinfection** only. For general **care and maintenance** instruction related to the upkeep of a product's aesthetics over time, please refer to the Care and Maintenance guide.



- **Disinfecting Wipes** (containing Quaternary compound disinfectant). Look for products whose active ingredient is a Quaternary Ammonium Compound or "Quat" disinfectant. Make sure the wipes **do not include** bleach



- **Alcohol disinfectants** 70% medical alcohol (70% is minimum recommended by CDC). Disinfecting spray without bleach
- **Cleaners containing Hydrogen peroxide**



Want to Learn more?

Discover the [European Colour
Collection Product Matrix](#)

document an all the fabrics and
finishes options for each

Haworth product including more
detailed information about each
fabric material.

Be inspired, get creative!